



# 2021+ Ford Bronco 50 Inch Windshield Light Bracket Kit Part Number 10409

How to install the 10409 50 Inch Windshield Light Bracket Kit on a 2021+ Ford Bronco.

Written By: Chris



## INTRODUCTION

This guide will walk through the correct installation procedure for the Grimm OffRoad Bronco 50 Inch Windshield Light Bracket Kit.

## Consumer Warning

All Grimm OffRoad products must be installed by a competent and qualified individual in accordance with the installation instructions intended for the product. Incorrectly installed products will void any warranties and may result in damage to the product or damage to the vehicle it was installed on. Read any provided instructions or guides and watch any available videos before attempting installation. If there are any questions, please contact Grimm OffRoad before starting installation.

Many products require the vehicle be properly raised and supported off the ground. The installer is responsible for confirming that this may be done in a safe manner and the correct equipment is available to perform the installation. Grimm OffRoad installation instructions assume the installer is able to properly and safely lift the vehicle.

Vehicles that have been modified will not perform the same as a stock vehicle. It is incumbent upon the owner of the vehicle to be aware of the differences the modifications will make to the driving characteristics of the vehicle. These may include (but are not limited to): changes in handling, braking, rollover angle, incompatibilities with the factory anti-lock braking systems, stability control systems, or traction control systems.

## Notes

- This light bracket kit is designed to be used with most 50" Light Bars.



### TOOLS:

- 10mm Socket/Wrench (1)
- Torque Wrench (1)
- Medium Strength Threadlocker (Optional) (1)



### PARTS:

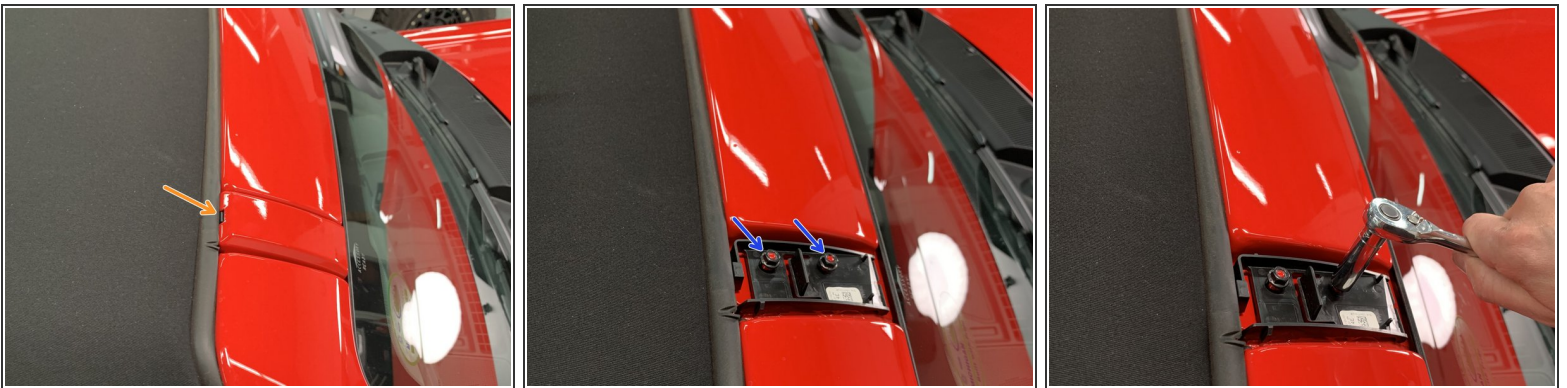
- 50 Inch Driver Windshield Light Mounting Bracket (1)
- 50 Inch Passenger Windshield Light Mounting Bracket (1)

## Step 1 — Included Parts



⚠ Verify that all parts shown in the picture are present.

## Step 2 — Remove Windshield Accessory Mount Caps



- Remove both Windshield Accessory Mount Caps by pushing inward on plastic tab.
- Removing Windshield Accessory Mount Cap Mounting Brackets using a 10mm socket/wrench.



### Step 3 — Mount Light Bar



- It may be easier to mount the light bar to the Grimm OffRoad mounting brackets first, but installation can be done in either order.
- ⓘ Note that there is a left and right bracket. The mounting holes for the vehicle should be inboard.
- Attach the brackets to the light bar but leave the light bar hardware loose for now.
- Slide the light bar brackets over the mounting studs on the vehicle and loosely reinstall the M6 nuts removed earlier.
- ⚠ Medium strength threadlocker is recommended for the M6 nuts.
- Adjust light bar to desired angle and tighten light bar mounting hardware to manufacturer's specifications.
- ⓘ Torque the M6 nuts to 8 lb-ft [11 Nm].

## Step 4 — Wire Lights



- Wire light bar per light manufacturer's instructions.

Installation is complete!

With any modified vehicle, or any vehicle used offroad, it is a good idea to check bolt torques periodically and visually inspect components regularly.