



# 2019+ Ford Ranger Hood Hinge Light Brackets

## Part Number 10159

How to install the 10159 Hood Hinge Light Brackets on a 2019+ Ford Ranger.

Written By: Chris



## INTRODUCTION

This guide will walk through the correct installation procedure for the Grimm OffRoad Ford Ranger Hood Hinge Light Brackets.

## Consumer Warning

All Grimm OffRoad products must be installed by a competent and qualified individual in accordance with the installation instructions intended for the product. Incorrectly installed products will void any warranties and may result in damage to the product or damage to the vehicle it was installed on. Read any provided instructions or guides and watch any available videos before attempting installation. If there are any questions, please contact Grimm OffRoad before starting installation.

Many products require the vehicle be properly raised and supported off the ground. The installer is responsible for confirming that this may be done in a safe manner and the correct equipment is available to perform the installation. Grimm OffRoad installation instructions assume the installer is able to properly and safely lift the vehicle.

Vehicles that have been modified will not perform the same as a stock vehicle. It is incumbent upon the owner of the vehicle to be aware of the differences the modifications will make to the driving characteristics of the vehicle. These may include (but are not limited to): changes in handling, braking, rollover angle, incompatibilities with the factory anti-lock braking systems, stability control systems, or traction control systems.

## Notes

- These light brackets are designed to be used with pod lights up to 3" in diameter.



### TOOLS:

- [13mm Socket/Wrench](#) (1)
- [Torque Wrench](#) (1)




### PARTS:

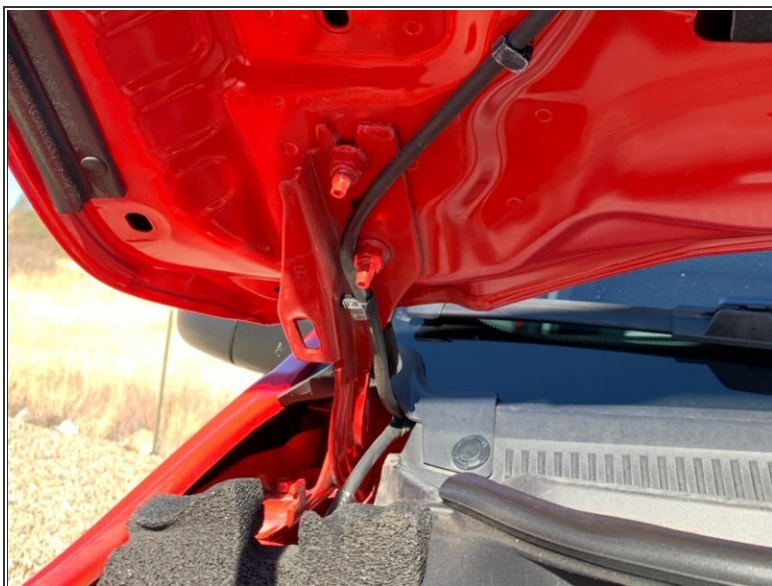
- [Driver Side Hood Hinge Light Bracket](#) (1)
- [Passenger Side Hood Hinge Light Bracket](#) (1)

## Step 1 — Verify Parts



 Verify that all parts shown in the picture are present.

## Step 2 — Loosen Hood Hinge Nuts



- Perform the installation of the brackets one side at a time.
- Using a 13mm socket, loosen both hood hinge nuts on one side of the vehicle.

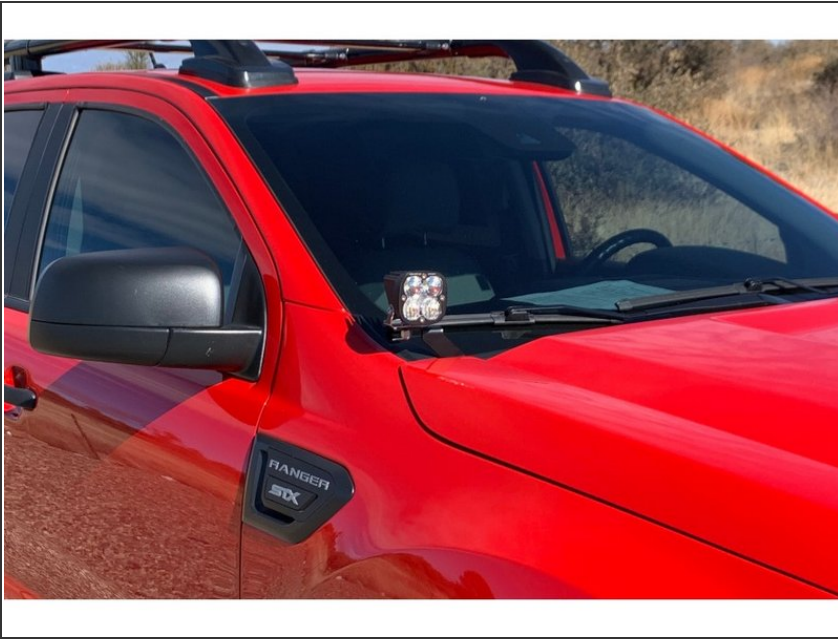


### Step 3 — Install Hood Hinge Light Bracket



- i** There is a left and right hood hinge light bracket. Make sure you have the correct bracket for the side you are installing. The brackets install from the center of the vehicle out, with the slots sliding over the hood studs as shown.
- Slide the light bracket onto the hood studs and then lightly tighten the nuts.
  - Take care to make sure the hood hinge location did not move. It is recommended to slowly close the hood to verify it still lines up correctly. Adjust if necessary.
- i** Torque hardware to 15 lb-ft [20Nm].

## Step 4 — Install Lights



- Repeat steps 2 and 3 for other side.
- Install lights onto the light brackets per light manufacturer's instructions.

Installation is Complete!