



# Jeep JL/JT Steel Bumper Center Light Mount

## Part Number 10070

How to install the 10070 Center Light Mount on a Jeep Wrangler JL or Gladiator JT equipped with the factory steel bumper.

Written By: AJ Smith



## INTRODUCTION

This guide will walk through the correct installation procedure for the Grimm OffRoad Center Light Mount on a Jeep Wrangler JL or Gladiator JT equipped with the factory steel bumper.

## Consumer Warning

All Grimm OffRoad products must be installed by a competent and qualified individual in accordance with the installation instructions intended for the product. Incorrectly installed products will void any warranties and may result in damage to the product or damage to the vehicle it was installed on. Read any provided instructions or guides and watch any available videos before attempting installation. If there are any questions, please contact Grimm OffRoad before starting installation.

Many products require the vehicle be properly raised and supported off the ground. The installer is responsible for confirming that this may be done in a safe manner and the correct equipment is available to perform the installation. Grimm OffRoad installation instructions assume the installer is able to properly and safely lift the vehicle.

Vehicles that have been modified will not perform the same as a stock vehicle. It is incumbent upon the owner of the vehicle to be aware of the differences the modifications will make to the driving characteristics of the vehicle. These may include (but are not limited to): changes in handling, braking, rollover angle, incompatibilities with the factory anti-lock braking systems, stability control systems, or traction control systems.

## Supporting Parts

This Grimm OffRoad product is designed to be used in conjunction with aftermarket performance lights. This may be a single 10" light bar, or a pair of pod lights. It is up to the consumer to verify that the lights will be compatible with the mount. It is important to review and familiarize yourself with the instructions provided with the light(s) before beginning installation.



### TOOLS:

- [T45 Torx Driver](#) (1)
- [13mm Open End Wrench](#) (1)



### PARTS:

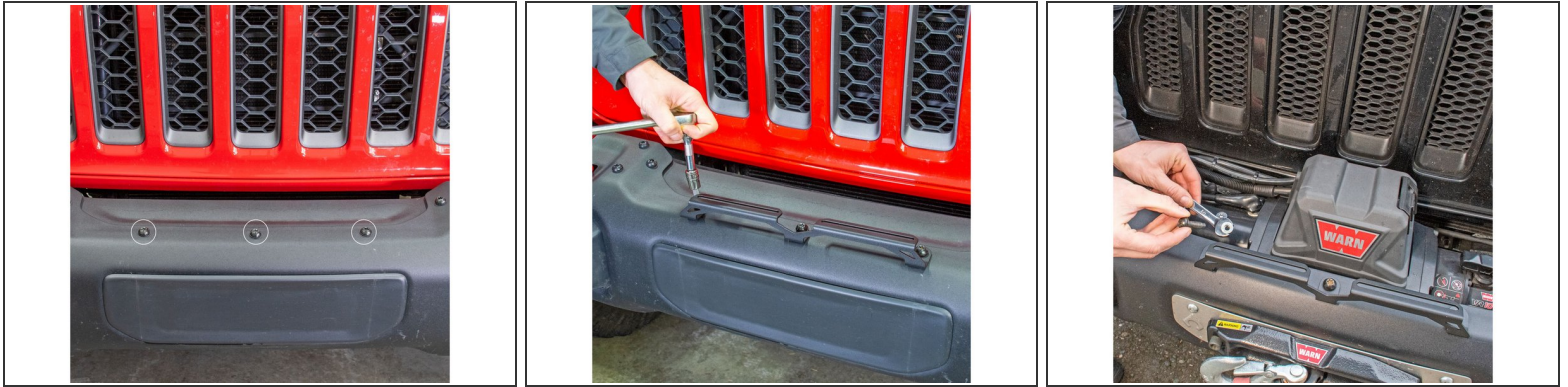
- [Center Light Mount](#) (1)
- [M8x1.25 Flange Nut](#) (3)


## Step 1 — Determining Installation Type



- ① If the vehicle has a winch installed, or has had the blanking plate removed then the 3x M8 nuts will need to be used.
- ① If the vehicle still has the blanking plate then the factory clip nuts will be used.

## Step 2 — Installing Bracket Part 1



- The light mount installs in the position shown, over the front 3 bolts that secure the blanking plate.
  - If the blanking plate is still installed, remove the 3 bolts shown with a T45 driver.
  - If the blanking plate has been previously removed, locate 3 of the bolts that had previously secured the blanking plate.
  - If the blanking plate is to be maintained, place the Center Light Mount over the center 3 holes and re-install the factory hardware.
  - If there is no blanking plate, place the center mount over the center 3 holes and secure with factory bolts and provided flange nuts. Hold nuts with a 13mm wrench.
-  Torque hardware to 17 lb-ft [24 Nm].



## Step 3 — Install Lights



- Install light(s) per the manufacturer's instructions.

Installation is complete!

With any modified vehicle, or any vehicle used offroad, it is a good idea to check bolt torques periodically and visually inspect components regularly.